

XYGATE® SecurityOne® Appliance Sentry Monitor

HPE NonStop CLIM and NSC Risk Management

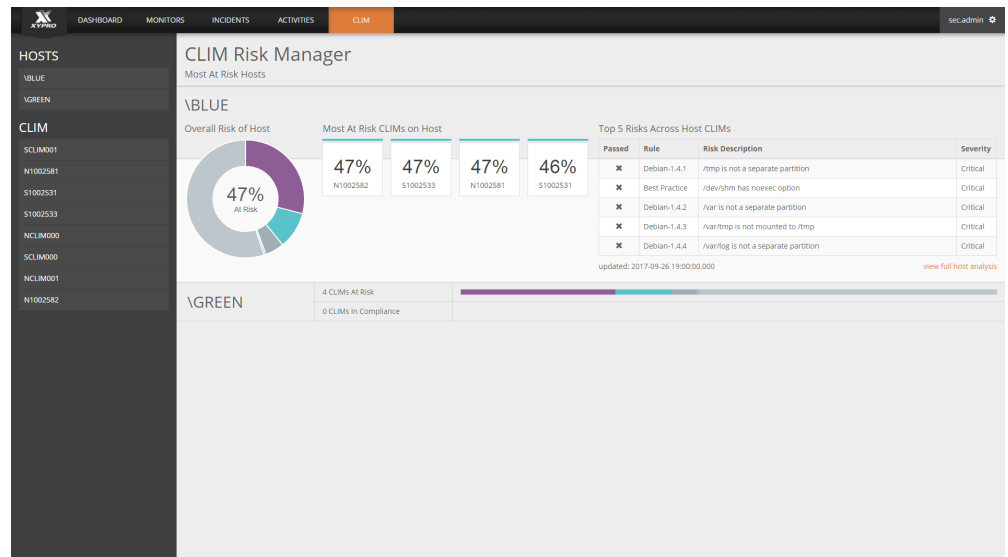


KEY BENEFITS

- Reduce security gaps Continuous monitoring, managing and remediating risk
- Comprehensive security hardening based on industry best practices
- Maximize visibility of NonStop appliances

KEY FEATURES

- Single Platform for CLIM and NSC Security Management and Analysis
- Modern Browser Application Interface
- Automate Policy Management, Compliance and Reporting
- Actionable Dashboard Quickly Highlights Critical Information
- Remediation Recommendations ensure risk is addressed



Overview

Insecure and misconfigured NonStop Cluster I/O Modules (CLIM) and NonStop Consoles (NSC) put your entire HPE NonStop ecosystem at risk from external threats, data loss, and unauthorized access. Mitigating these risks can be a challenge. Visibility into CLIM configurations and continuous monitoring is a complicated and time consuming activity. CLIM and NSC security requires different tools to manage and enforce corporate policies.

Monitoring these appliances has been largely neglected because visibility into CLIM and NSC security has never existed - until now. **XYGATE SecurityOne - Appliance Sentry Module (ASM)** continuously monitors your NonStop Appliances, identifies insecure or misconfigured settings and provides a risk score and remediation actions to ensure your appliances get to a healthy state and stays there.

Comprehensive CLIM and NSC Security

The XS1 Appliance Sentry Module scans and reports on NonStop Cluster I/O Module (CLIM) security configuration to detect at-risk items. ASM gathers data from multiple CLIMs across multiple NonStop servers, InfoSec teams are proactively alerted to identified risks in their CLIM environment, leveraging XS1 patented contextualization technology to immediately detect at risk items for faster and actionable response.

Remediation Actions

Detailed steps to correct at risk items provide the necessary clarity for quick remediation. XS1 ASM scans provide value in minutes to report at risk security configurations. Clear descriptions and straightforward remediation steps provide everything you need to accurately assess and act on incidents faster and with confidence.

XYGATE® SecurityOne® Appliance Sentry Monitor

HPE NonStop CLIM and NSC Risk Management



64% of organizations experienced an attack on an improperly configured endpoints over the past 12 months.

-Ponemon Institute

Unified Console for Appliance Security

Appliance Sentry Module is a licensable module for the XYGATE SecurityOne® platform, providing contextualized security information on CLIM and other appliance configurations. Results are presented in an actionable, easy-to-use interface, giving you a powerful tool for securing and mitigating risks.

XYGATE SecurityOne's Appliance Sentry Module reduces the risk of a catastrophic security breach and costly data recovery.

Integrate Enriched Data

XYGATE SecurityOne creates rich, contextual NonStop data that is seamlessly integrated into an enterprise SIEM like ArcSight, IBM QRadar, Splunk, RSA NetWitness etc, for inclusion in the complete enterprise security picture. This means NonStop servers are actively participating in your company's enterprise security infrastructure for compliance, alerting, forensics and risk management.

This availability of contextual data immediately decreases false positives, allowing enterprise security teams to focus on true security incidents. This rich data generates more meaningful security alerts, queries and reports, maximizing the value of the data and the actions taken by your security team.

Comprehensive Security Checks

Appliance Sentry Module security checks are performed during risk evaluation. Checks are based on CIS (Center for Internet Security) benchmarks as well as NonStop Best Practices and each security check references the source of its benchmark or best practice.

Complete Coverage

CLIM scanning is the missing puzzle piece for NonStop security administrators. By fully analyzing and pulling in contextual end-point data, the Appliance Sentry Monitor "clicks into place" full coverage for SecurityOne. Eliminate blind spots by evaluating each CLIM or other appliance within your NonStop network for a comprehensive understanding of potential threats.