

# SQLXPress

Secure Database Management for HPE NonStop SQL Databases

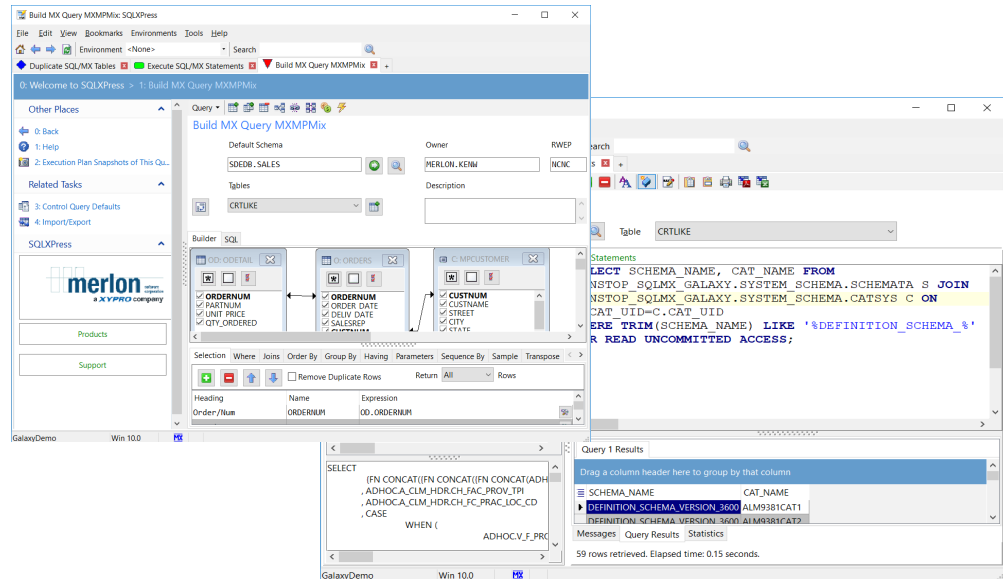


## KEY BENEFITS

- Increased Productivity
- Added Security
- Improved Application Performance
- Modernized Database Operations
- Simplified Database Administration
- Reduced Risk

## KEY FEATURES

- SQL/MX 2.3.4 or later and SQL/MP 350 or later
- Track plans for programs, modules and stand-alone queries
- Identify and optimize inefficient queries using the Visual Query Tuner
- Apply commands to multiple objects
- Boost productivity with wildcards
- Advanced partition management
- SQL statistics management (including copy, backup, and restore)
- Supports SQL “whiteboard” with syntax highlighting, code completion, command history, and more
- Import and export data between NonStop SQL and other databases
- Audit user activities



HPE NonStop SQL/MP was the first SQL implementation capable of supporting high-performance OLTP applications. Its successor, SQL/MX, continues to focus on performance while offering the benefits of ANSI-standard SQL. Both databases are used in the most demanding mission-critical applications in the world. In a typical NonStop SQL environment, there are complex relationships between hundreds or even thousands of application programs, SQL modules and SQL database objects. Managing this diverse environment has ultimately become a challenge for database administrators and technical support staff.

## The SQLXPress Solution

SQLXPress manages large, complex, mission-critical database environments and is the essential companion for HPE NonStop SQL.

SQLXPress is a productivity boosting, risk managing tool for database administrators, software developers, quality assurance analysts and technical support staff.

## Simplify Database Administration

SQLXPress administration functions simplify SQL database management. The solution supports all standard DDL operations, and many advanced features that are not available with MXCI or SQLCI', such as compare data definition language (DDL), two-way object relationship browsing, multi-object commands and partition key data analysis.

## Increase Productivity

Developing complex SQL queries manually is error prone. The SQLXPress visual query builder, means query development is quick and accurate. Users no longer have to remember complex syntax and query elements like table names, column names, join conditions and function names are specified using drag-and-drop, pick lists, browsers and other graphical methods.

Complex queries, such as unions and subquery and results can be displayed in a grid. “What If?” experimentations are simple and query design is saved for use in an SQL script, a C or COBOL program. Users can even save a query as an SQL view.

# SQLXPress



Secure Database Management for HPE NonStop SQL Databases

"We never knew what we were missing without SQLXPress. We'll never go back!"

-Sr. DBA Telecom Industry

## Improve Application Performance

SQLXPress provides the necessary tools to quickly identify potential problems in NonStop SQL execution plans before they are put into production.

The SQLXPress Visual Query Tuner supports intuitive plan diagrams, tracks query performance metrics, and supports remedial actions such as executing Update Statistics commands, creating and dropping indexes, using SQL CONTROL statements, and performing query rewrites.

## Secure

SQLXPress audits user activity. A full set of summary and detailed audit reports are provided. Audit data can be integrated into XYGATE Merged Audit.

## Simple Data Browsing

The SQLXPress data browser displays table rows in a grid with various options for selecting rows, columns and sort order. Row inserts, updates and deletes are automatically available with full transaction support.

## Statistics Management

Copying statistics from the production database into a test environment allows developers to tune queries with execution plans that reflect the live database. SQLXPress statistics management functions provide a safe and easy way copy statistics from one database to another.

## Modern User Interface

The SQLXPress user interface is easy for beginners to navigate, yet powerful, to handle expert users. There are no complex commands to learn, and online help is available. SQLXPress wizards guide users through complex tasks like table creation or partition management. The solution also offers many advanced features, such as multi-tab browsing, bookmarks and keyboard shortcuts.